

# **Solibri Connection Add-on for ARCHICAD 23 User Guide**

**Technology Preview**

## **GRAPHISOFT®**

Visit the GRAPHISOFT website at [www.graphisoft.com](http://www.graphisoft.com) for local distributor and product availability information.

### **Solibri Connection Add-on for ARCHICAD 23 User Guide**

Copyright © 2019 by GRAPHISOFT, all rights reserved. Reproduction, paraphrasing or translation without express prior written permission is strictly prohibited.

### **Trademarks**

ARCHICAD® is a registered trademark of GRAPHISOFT.  
All other trademarks are the property of their respective holders.

---

# Contents

|   |           |
|---|-----------|
| <b>Introduction</b>                           | <b>4</b>  |
| Technology Preview .....                      | 4         |
| Key Features and Benefits .....               | 4         |
| <b>Getting Started</b>                        | <b>5</b>  |
| Install Add-On .....                          | 5         |
| Uninstall Add-On .....                        | 5         |
| <b>Establish the Connection</b>               | <b>6</b>  |
| <b>Export model to Solibri</b>                | <b>7</b>  |
| Export multiple models into one Solibri ..... | 9         |
| <b>Select Elements in Solibri</b>             | <b>10</b> |
| <b>Get Selection Basket</b>                   | <b>11</b> |
| Select Visible .....                          | 12        |
| <b>Import All Issues</b>                      | <b>13</b> |
| <b>Saving the Model</b>                       | <b>14</b> |

# Introduction

The ARCHICAD-Solibri connection add-on provides fast and automated code- and constructability checking. The updated add-on automatically detects and sends only those elements that are changed in the ARCHICAD model, resulting in faster round-trip collaboration. BCF-based issue reporting was introduced to this workflow, enabling designers to assign the detected issues or solve them later on.

This add-on allows fast BIM updates and the use of Solibri while working in a real time design scenario. No longer do you need to save files and upload back and forth between programs. Simply design, check and amend as necessary.

## Technology Preview

Technology Preview features provide early access to upcoming product innovations, enabling users to test functionality and provide feedback during the development process.

Technology Preview features are not fully supported, may not be functionally complete, and are not suitable for deployment in production.

We are considering the future iterations of technology preview, and will attempt to resolve any issues that customers experience when using these features.

## Key Features and Benefits

- IFC-based data exchange:
  - ARCHICAD Classifications
  - ARCHICAD Properties
  - IFC Type Products
  - Colors
  - Space boundaries
  - Junctions, priority-based connections
  - Hierarchical elements
- Fast synchronization between the two applications
- Ability to manage the exported content
- Selection of elements in ARCHICAD based on the selection in Solibri
- Selection of elements in Solibri based on the selection in ARCHICAD
- Connection between the applications can be re-established
- BCF-based issue import into ARCHICAD

---

# Getting Started

## Install Add-On

1. Before installing the Add-on, make sure that ARCHICAD 23 is installed on your computer.
2. Download the Add-on to your computer.
3. Launch the Setup Wizard.
  - On Windows: Double-click on the .exe file to launch the Setup Wizard.
  - On MacOS: Double-click on the installer file to launch the Setup Wizard.

After installing, the Add-on will be placed in the following folder:

- On Windows: Program Files\GRAPHISOFT\ARCHICAD 23\Add-Ons\Solibri Connection
- On MacOS: Applications/GRAPHISOFT/ARCHICAD 23/Add-Ons/Extras

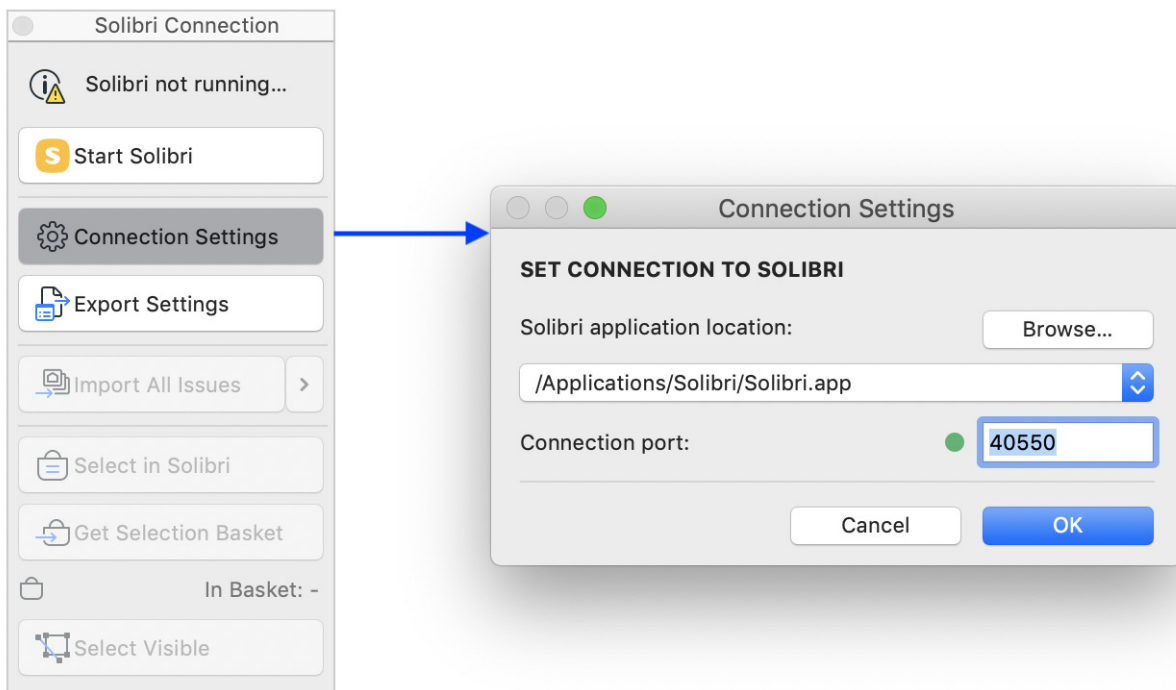
## Uninstall Add-On

On Windows: Navigate to Program Files\GRAPHISOFT\ARCHICAD 23\Uninstall.SB and click on **Uninstall**.

On MacOS: Navigate to Applications/GRAPHISOFT/ARCHICAD 23/Uninstall.SB and click on **Uninstall**.

# Establish the Connection

1. Open Solibri Connection palette from **File > Interoperability > Solibri Connection** or from **Window > Palettes**.
2. Click **Connection Settings**.
3. Check if ARCHICAD has found the location of Solibri.app. If not, click the Browse button and select your Solibri application.
4. The communication between the two application requires a free Connection port. Green sign indicates the port is free and ready to use.  
If it is red, another port must be used.



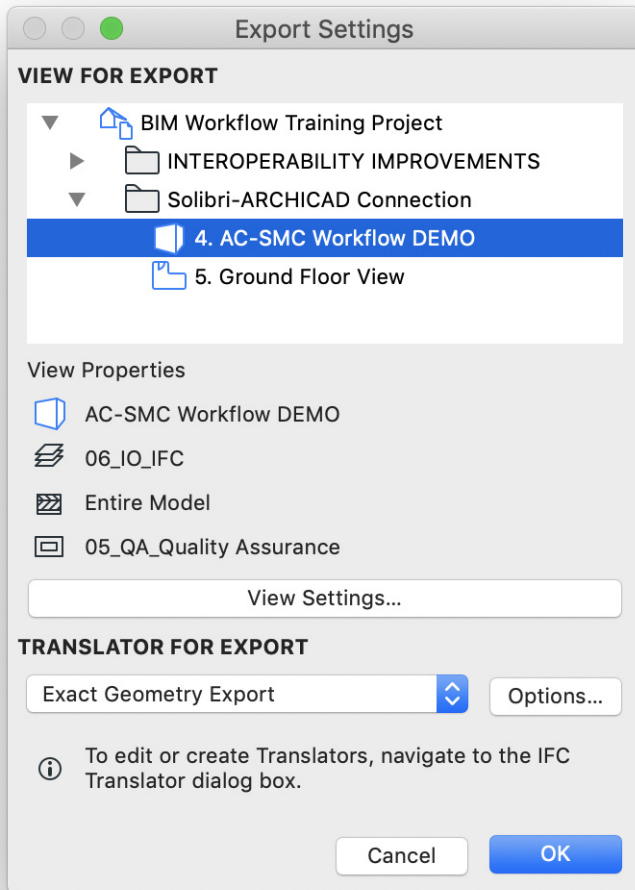
5. Start Solibri.  
**Please note:** Solibri must be started from ARCHICAD to enable the communication between the two applications.

# Export model to Solibri

1. Click on **Export Settings**.

2. Select the view for export.

The selected view can either be 2D or 3D. In case of floor plan view, those elements which are visible on the selected story will be exported.

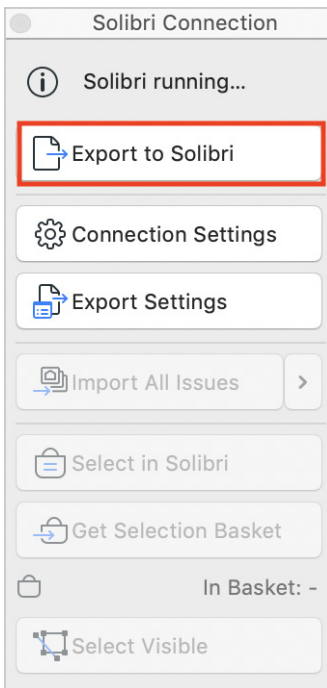


3. Select the IFC translator for the Export.

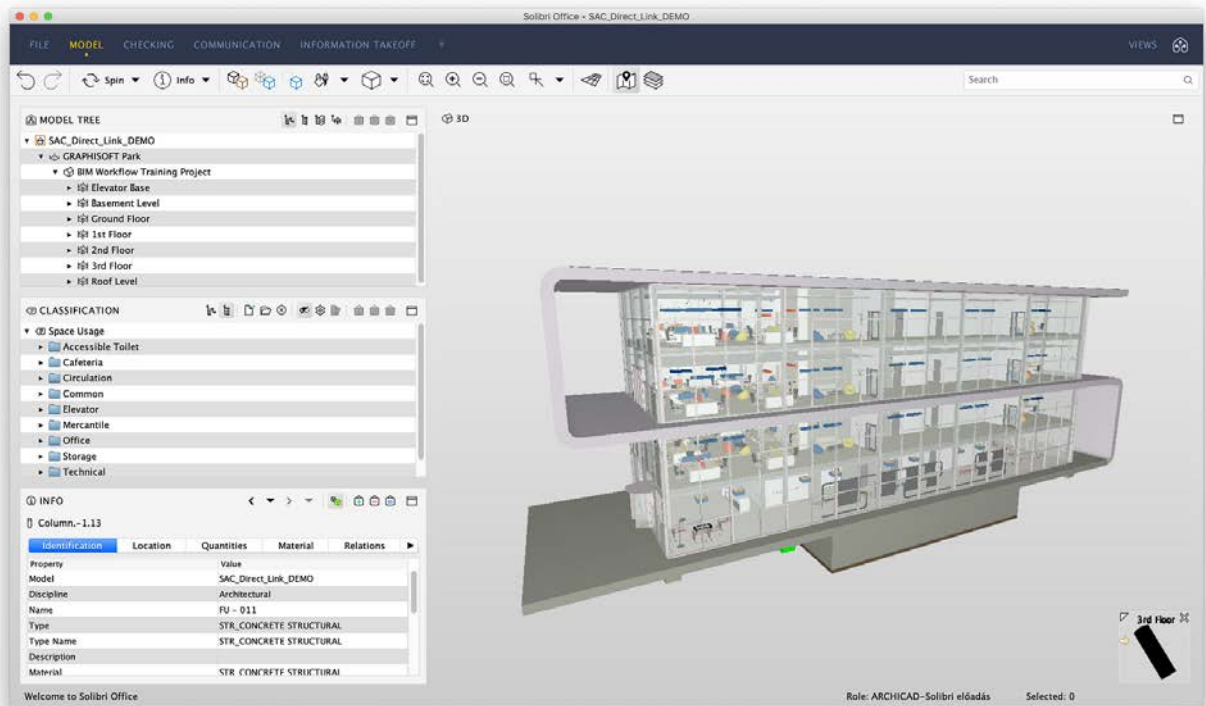
Translators can be managed from **File > Interoperability > IFC > IFC Translators**.

4. After you have selected the view and the translator: click **OK**.

5. Click on **Export to Solibri**.



6. Solibri will be activated when the export is finished.

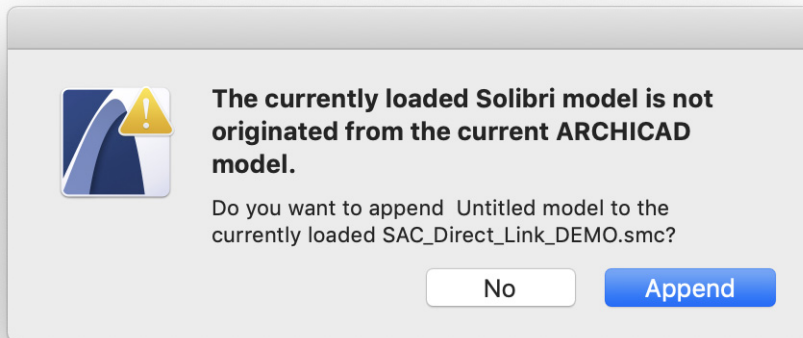




## Export multiple models into one Solibri

Users can connect multiple ARCHICAD instances with one Solibri. Once the connection between the ARCHICAD and Solibri is established, the second ARCHICAD can be connected as well.

1. Activate the second ARCHICAD.
2. Click on **Export to Solibri**.
3. Click on **Append**.

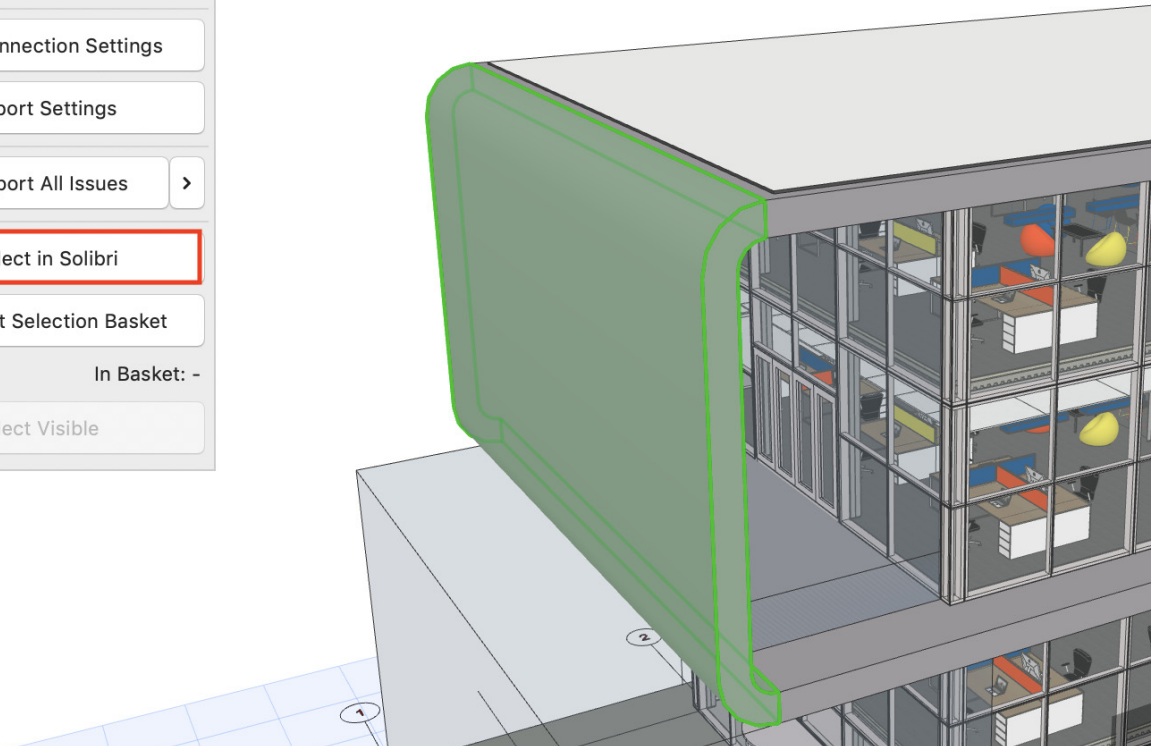
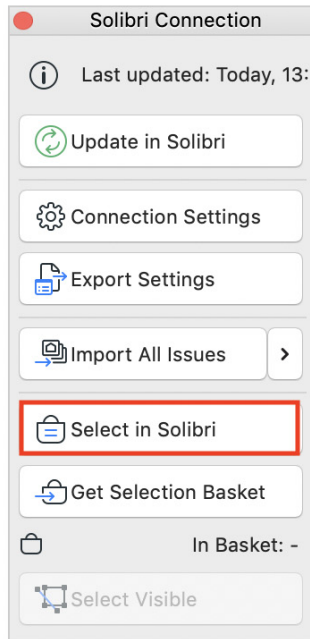


This model will appear in Solibri next to the first one.

# Select Elements in Solibri

Selected elements in ARCHICAD can be selected in Solibri as well.

1. Select elements in ARCHICAD.
2. Click the **Select in Solibri** command on Solibri Connection palette.

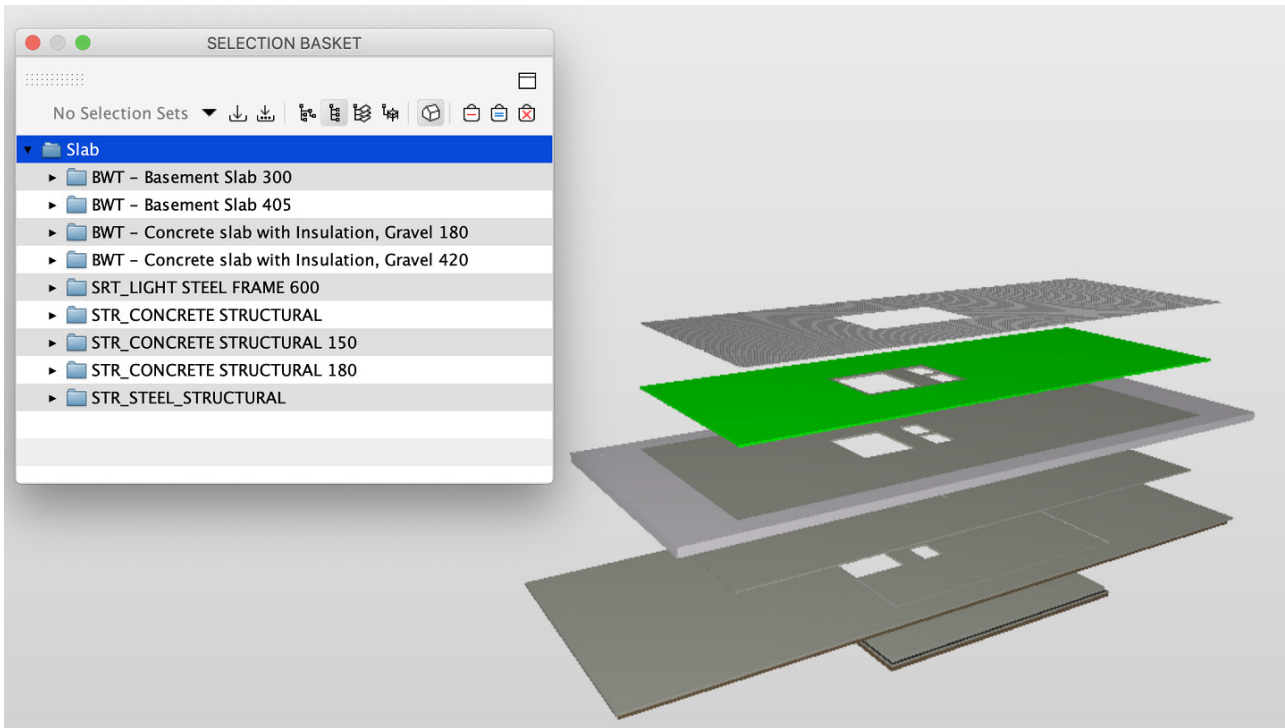


Solibri automatically becomes active and the Selection Basket is filled with the selected elements from ARCHICAD.

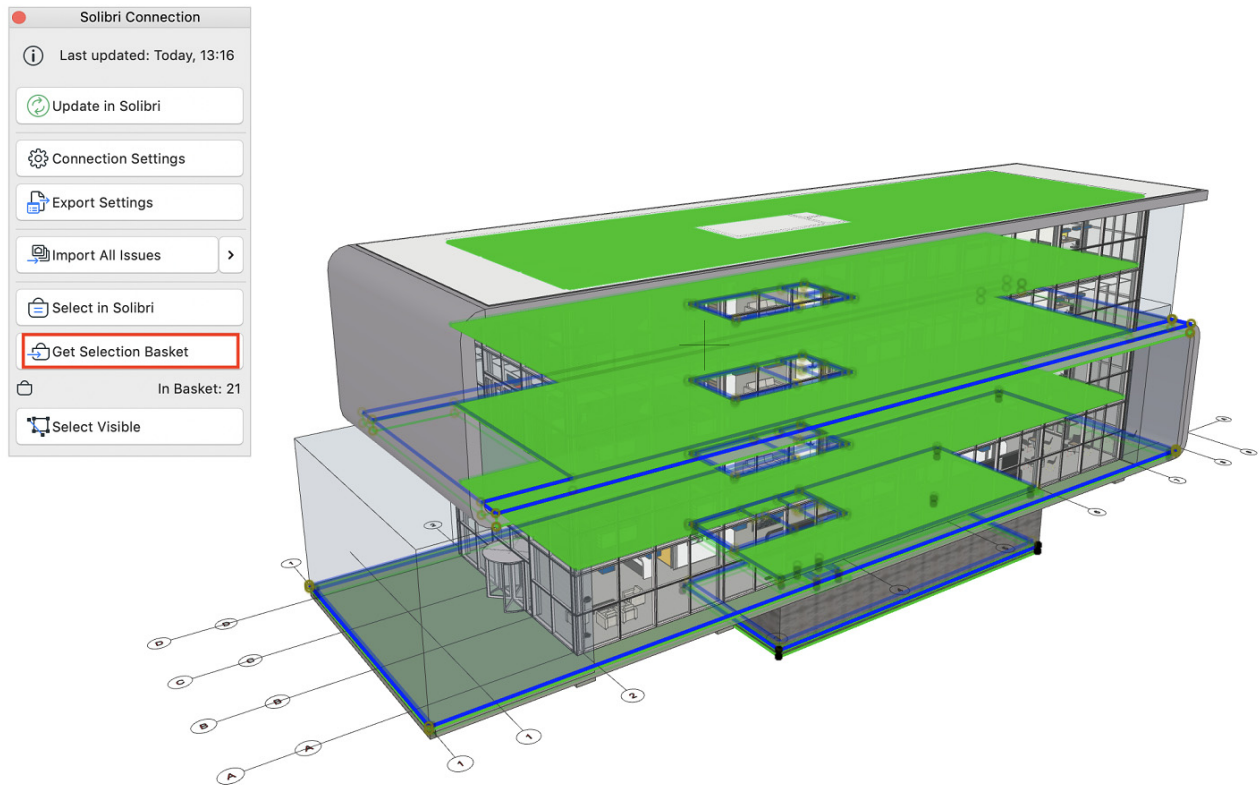
# Get Selection Basket

When you find components that need to be fixed in Solibri, use **Get Selection Basket** to easily select them in ARCHICAD.

1. In Solibri, add Elements to Selection Basket.



2. In ARCHICAD, click on **Get Selection Basket**.



All components in the Selection Basket will be selected in ARCHICAD. The number of elements in the Basket is displayed on the palette.

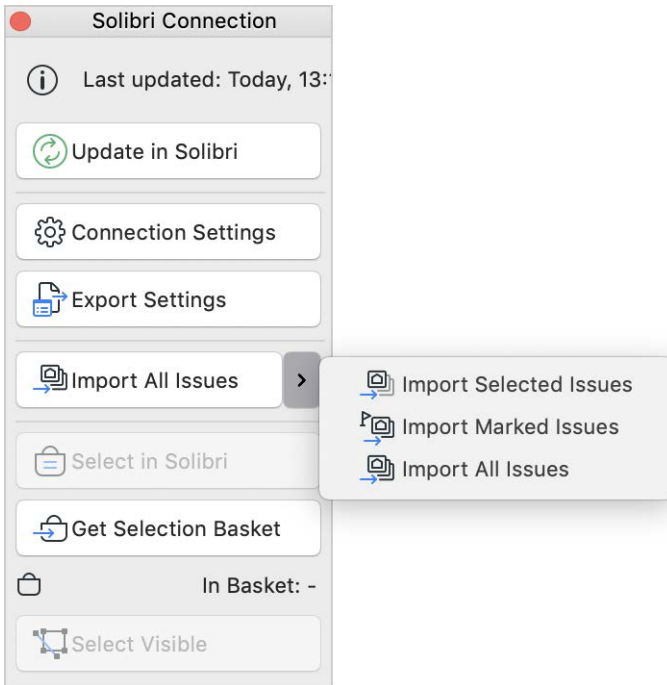
## Select Visible

Once you have gotten the content of the Selection Basket, you can go to any view and select the visible elements by clicking the **Select Visible** button.

If the list of the selected elements must be updated, you must again click on **Get Selection Basket**.

# Import All Issues

Issues created in Solibri can be imported to ARCHICAD. You can import all issues, or limit the import to selected or marked issues.



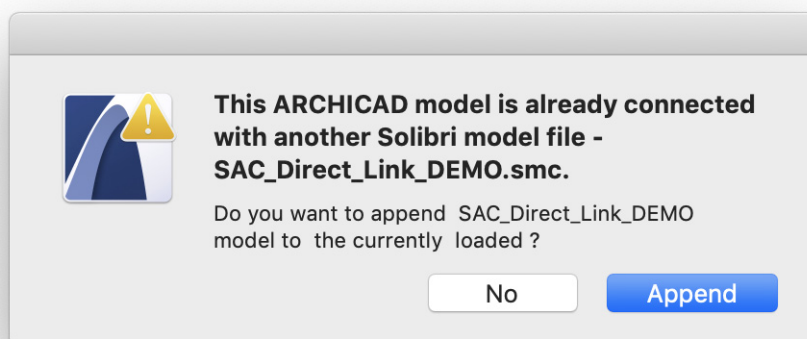
- Import Selected Issues
- Import Marked Issues
- Import All Issues

| ISSUES |                                 |        |                   |     |         |  | New Issue |  |
|--------|---------------------------------|--------|-------------------|-----|---------|--|-----------|--|
|        | Title                           | Status | Creation date     | No. | Trac... |  |           |  |
|        | (ARCHITECTURAL) Beam.2.3,       | Open   | 2018-05-12 14:... | 8   | 12      |  |           |  |
|        | (ARCHITECTURAL)                 | Open   | 2018-05-12 14:... | 9   | 20      |  |           |  |
|        | (ARCHITECTURAL) Roof.4.2        | Open   | 2018-05-12 13:... | 1   | 5       |  |           |  |
|        | (ARCHITECTURAL) Slab.3.1        | Open   | 2018-05-12 15:... | 3   | 9       |  |           |  |
|        | (ARCHITECTURAL) Space.2.8 :     | Open   | 2018-05-12 15:... | 19  | 3       |  |           |  |
|        | Beam                            | Open   | 2018-05-12 14:... | 2   | 22      |  |           |  |
|        | Bottom Elevation is 263.56 mm   | Open   | 2018-05-12 15:... | 23  | 13      |  |           |  |
|        | Café                            | Open   | 2018-05-12 15:... | 20  | 11      |  |           |  |
|        | Column too close to Furniture   | Open   | 2018-05-12 14:... | 17  | 7       |  |           |  |
|        | Covering too close to Door      | Open   | 2018-05-12 14:... | 10  | 19      |  |           |  |
|        | Covering too close to Furniture | Open   | 2018-05-12 14:... | 16  | 18      |  |           |  |

# Saving the Model

When you save the model in Solibri, the information of the saved model (file name and location) will be saved in the ARCHICAD model as well.

When you export the model next time, ARCHICAD will ask if you want to append the current model to the already saved SMC model.



If you click **Append**, ARCHICAD will update the opened .smc file with the current data.