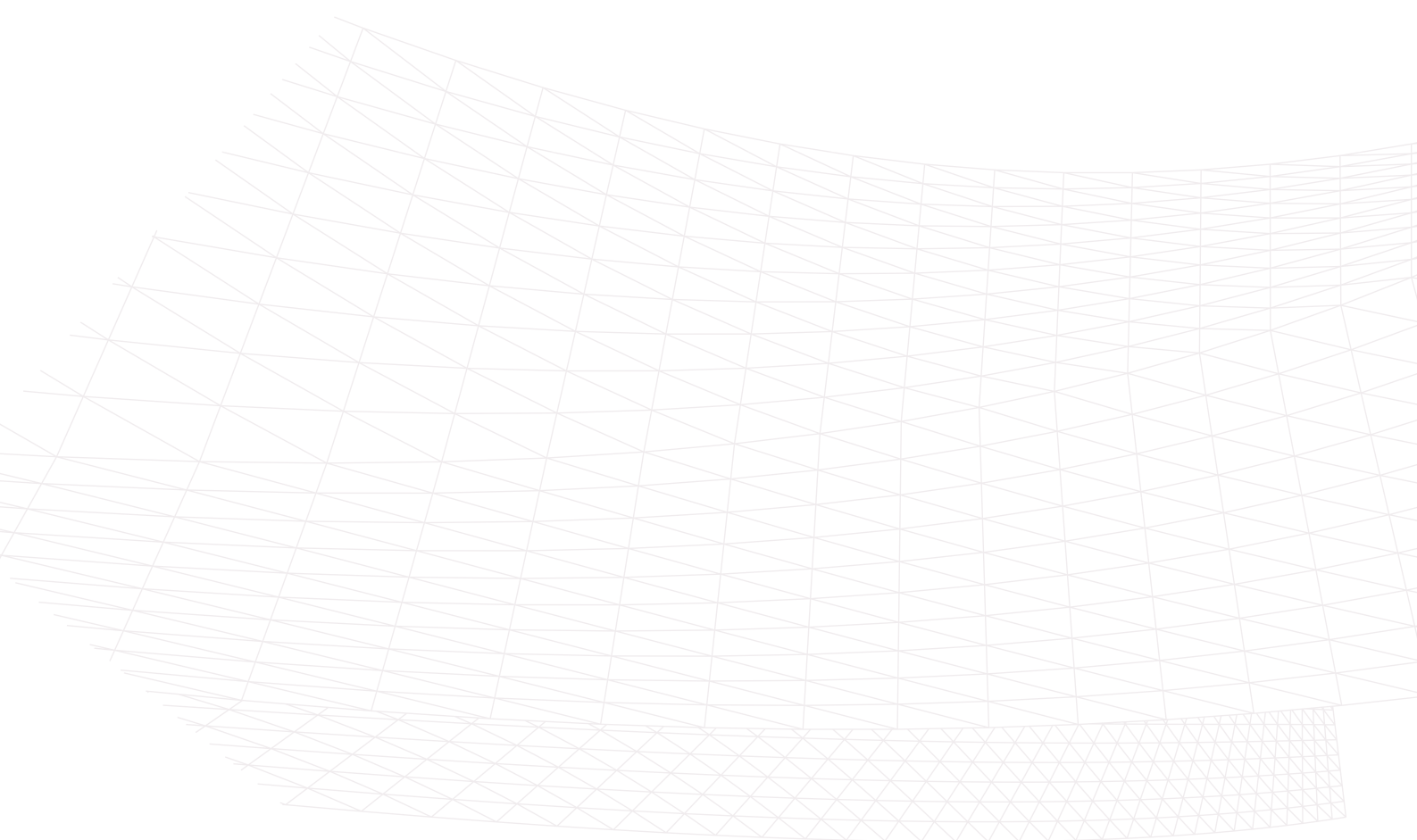


Solibri Connection Add-on for Archicad 24



GRAPHISOFT®

Visit the GRAPHISOFT website at www.graphisoft.com for local distributor and product availability information.

Solibri Connection Add-on for Archicad 24

Copyright © 2020 by GRAPHISOFT, all rights reserved. Reproduction, paraphrasing or translation without express prior written permission is strictly prohibited.

Trademarks

ARCHICAD® is a registered trademark of GRAPHISOFT.
All other trademarks are the property of their respective holders.

Contents

Introduction	1
Getting Started	2
Connect to Solibri	3
Export Model to Solibri	5
Select Elements in Solibri	7
Get Selection Basket	8
Import Issues from Solibri	10
Break Solibri File Link	11

Introduction

The Archicad-Solibri connection add-on provides fast and automated code- and constructability checking. The updated add-on automatically detects and sends only those elements that are changed in the Archicad model, resulting in faster round-trip collaboration.

The workflow supports Issue reporting based on BCF 2.1, enabling designers to assign the detected issues or solve them later on.

This add-on allows fast BIM updates and the use of Solibri while working in a real time design scenario. No longer do you need to save files and upload back and forth between programs. Simply design, check and amend as necessary.

New in this version:

- Fully aligned with AC24's new Issue Manager functionality
- Improved info and feedback on Solibri Connection palette

Key Features and Benefits

- IFC-based data exchange:
 - Archicad Classifications
 - Archicad Properties
 - IFC Type Products
 - Colors
 - Space boundaries
 - Junctions, priority-based connections
 - Hierarchical elements
- Fast synchronization between the two applications
- Ability to manage the exported content
- Selection of elements in Archicad based on the selection in Solibri
- Selection of elements in Solibri based on the selection in Archicad
- Connection between the applications can be disconnected and re-established
- BCF-based issue import into Archicad

Getting Started

Install Add-On

1. Before installing the Add-on, make sure that Archicad 24 is installed on your computer.
2. Download the Add-on to your computer.
3. Launch the Setup Wizard.
 - On Windows: Double-click on the .exe file to launch the Setup Wizard.
 - On MacOS: Double-click on the installer file to launch the Setup Wizard.

After installing, the Add-on will be placed in the following folder:

- On Windows: Program Files\GRAPHISOFT\Archicad 24\Add-ons\Solibri Connection
- On MacOS: Applications/GRAPHISOFT/Archicad 24/Add-Ons/Extras

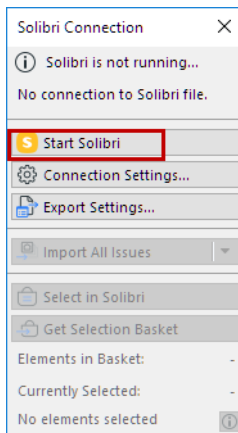
Uninstall Add-On

On Windows: Navigate to Program Files\GRAPHISOFT\Archicad 24\Uninstall.SB and click on **Uninstall**.

On MacOS: Navigate to Applications/GRAPHISOFT/Archicad 24/Uninstall.SB and click on **Uninstall**.

Connect to Solibri

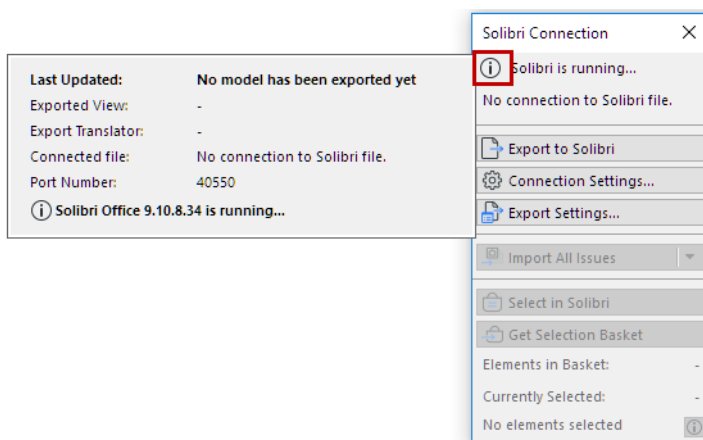
1. Open the **Solibri Connection** palette from
 - File > Interoperability > Solibri Connection or
 - Window > Palettes
2. Click **Start Solibri**.



Please note: Solibri must be started from Archicad to enable the communication between the two applications.

Connection Status

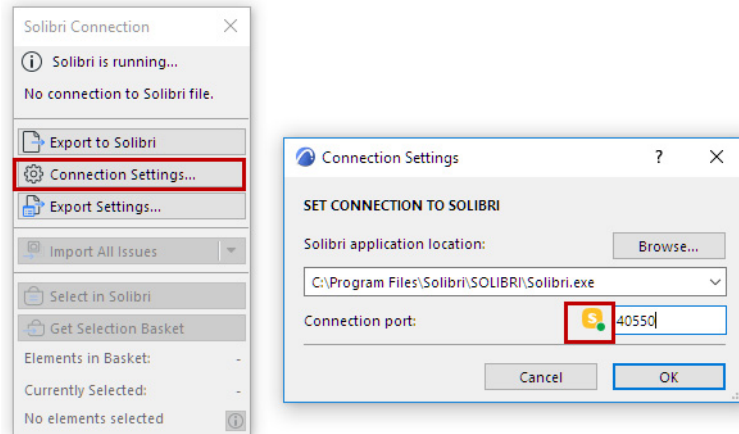
Check the top of the palette for the current status. If needed, click the info button for further details.



Connection Settings

If there is a problem with the connection, click **Connection Settings**:

- Check if Archicad has found the location of Solibri.app. If not, click **Browse** and select your Solibri application.
- The communication between the two application requires a free Connection port. The green dot indicates that the port is free and ready to use.
If it is red, enter a different port number.



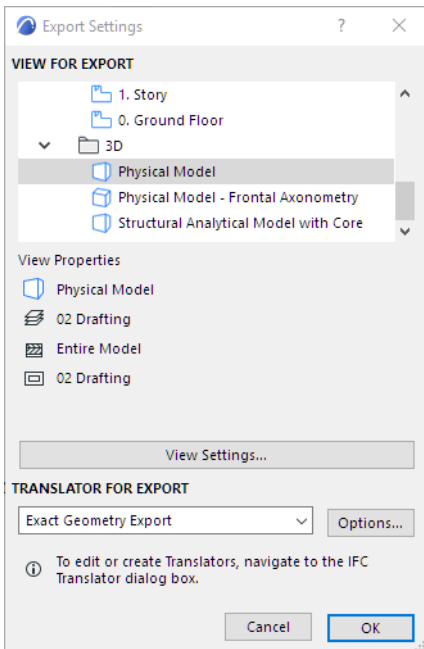
Export Model to Solibri

1. In the Solibri Connection palette: Click the **Export Settings** button.

2. Select the view for export.

The selected view can either be 2D or 3D. In case of floor plan view, the *visible* elements on the selected story will be exported.

Please note: Even if you select a Structural Analytical model view, all of the view's physical elements (not the Structural Members) will be exported to Solibri.



3. Select the IFC translator for the Export. (Click **Options** to see a summary of the IFC Translator's settings.)

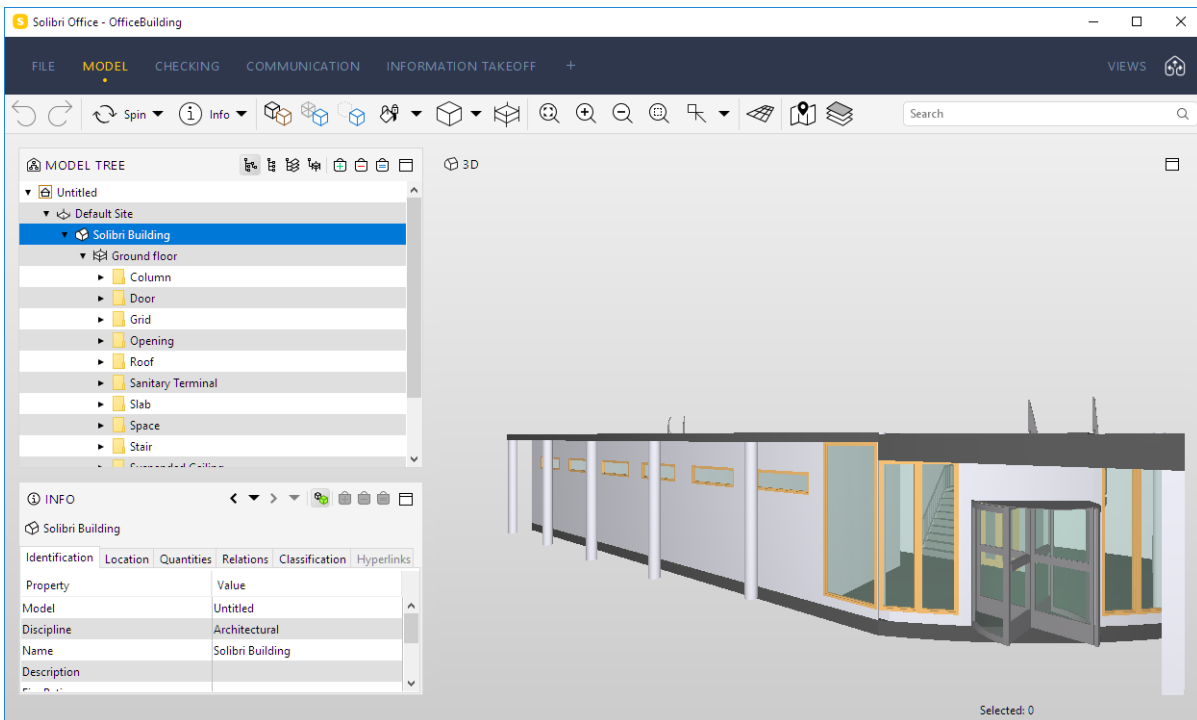
Translators can be managed from **File > Interoperability > IFC > IFC Translators**.

4. After you have selected the view and the translator: click **OK**.

5. In the Solibri Connection palette: Click **Export to Solibri**.



6. The model is exported.

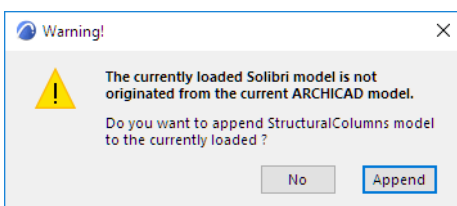


7. Make sure to save the model in Solibri: the next time you open it, the Solibri model can resume its connection to the Archicad model.

Export multiple models into one Solibri

Users can connect multiple Archicad instances with one Solibri. Once the connection between the Archicad and Solibri is established, the second Archicad can be connected as well.

1. Launch the second Archicad.
2. From the Solibri Connection palette, click on **Export to Solibri**.
3. A Warning appears: another Archicad model is already connected to the currently loaded Solibri model.



4. To add a second Archicad model: Click **Append**.

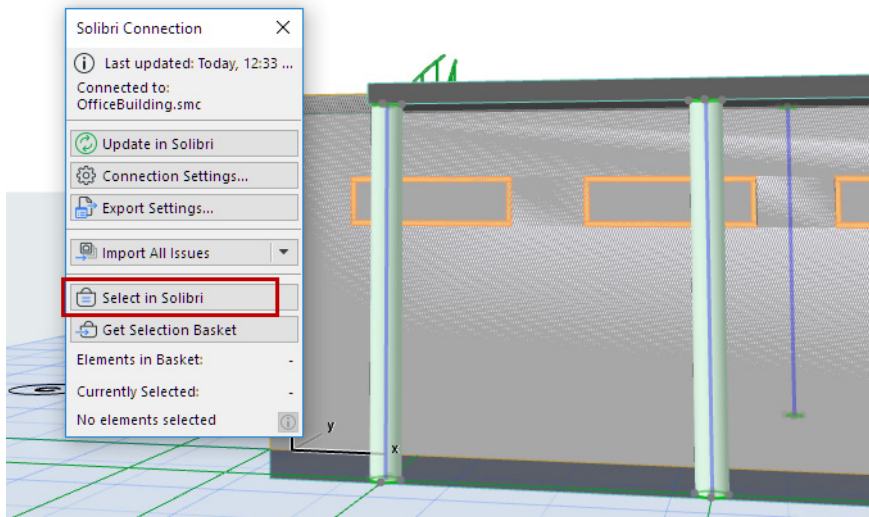
Note: In this situation, Connection Settings indicates that Solibri is using the port to connect to another Archicad. The same connection is used for the second Archicad model, too.

This model will appear in Solibri next to the first one.

Select Elements in Solibri

Selected elements in Archicad can be selected in Solibri as well.

1. Select elements in Archicad.
2. Click the **Select in Solibri** command on Solibri Connection palette.

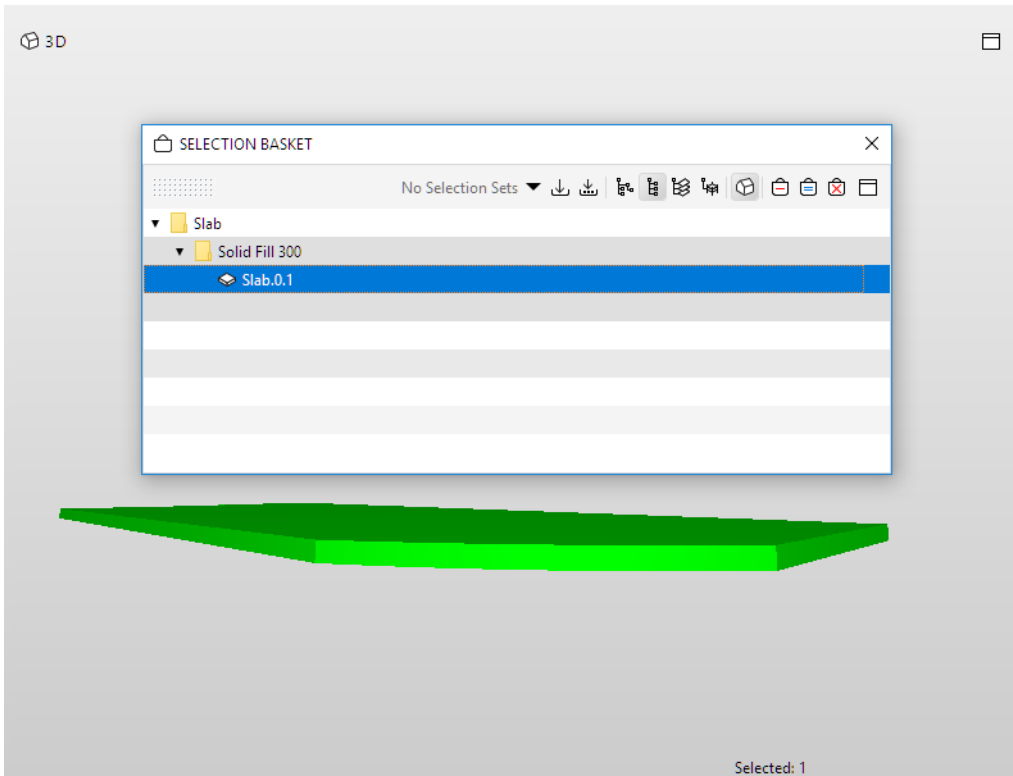


Solibri's Selection Basket is filled with the selected elements from Archicad.

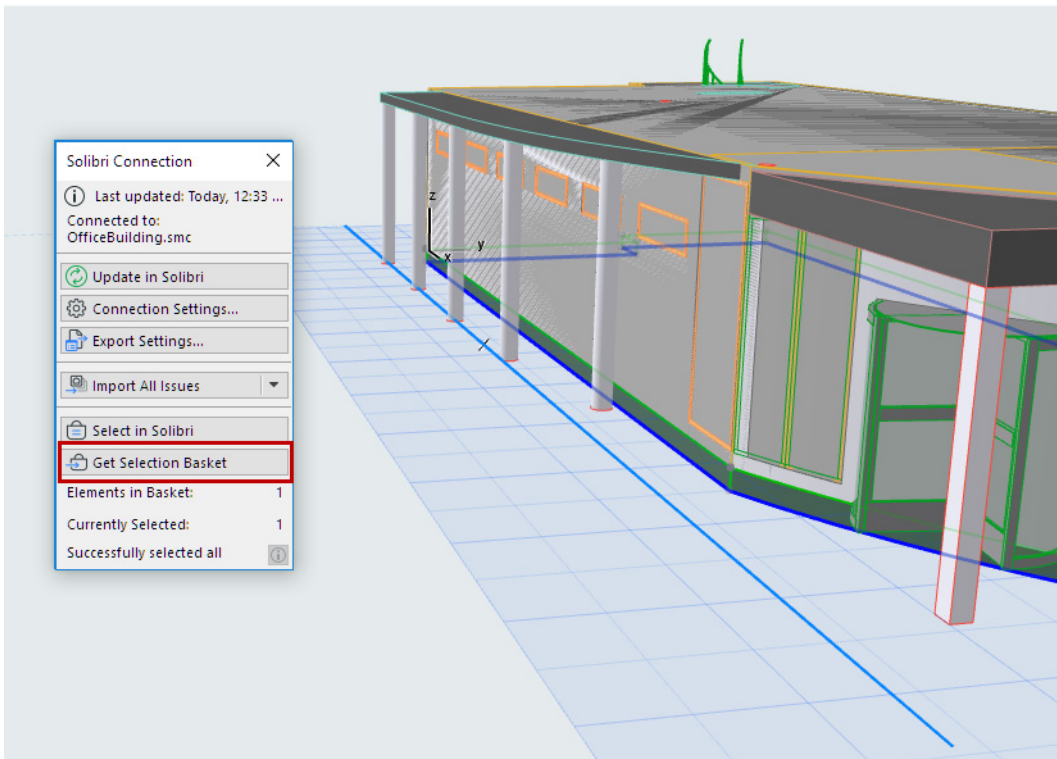
Get Selection Basket

When you find components that need to be fixed in Solibri, use **Get Selection Basket** to easily select them in Archicad.

1. In Solibri, add elements to the Selection Basket.



2. In Archicad, click **Get Selection Basket**.



All components in the Selection Basket will be selected in Archicad, provided that they are visible in the current view.

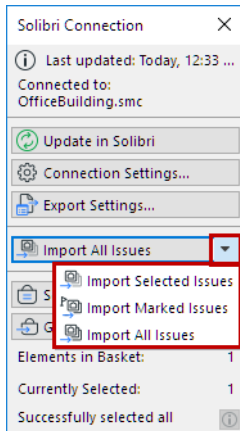
The Solibri palette gives you feedback on

- the number of elements in the Selection Basket
- the number of elements currently selected in Archicad
- whether any elements are not visible in Archicad, and therefore cannot be selected.

Import Issues from Solibri

Issues created in Solibri can be imported to Archicad's Issue Organizer, where you can handle them as needed.

You can import all issues, or limit the import to issues that are either selected or marked in Solibri.



Click one of the following commands from the pop-up:

- Import Selected Issues
- Import Marked Issues
- Import All Issues

Title	Tracking ID	Status
3 Covering too close to Door	13	Open
4 Covering too close to Furniture	14	Open
5 Slab	15	Open
6 Beam	4	Open
11 Column too close to furniture	12	Open

“Selected” and “Marked” (flagged) Issues in Solibri

The imported Issues are now added to Archicad's Issue Organizer.

Break Solibri File Link

This is an extra function that breaks the current connection between Archicad and Solibri.

This command is not available by default. To use it, first you must add it to an Archicad menu:

1. Go to **Options > Work Environment > Menus**
2. Choose the menu where you want to place the command (here, the File > Interoperability menu)
3. Search for the command: Break Solibri file link
4. Add it to the menu.

